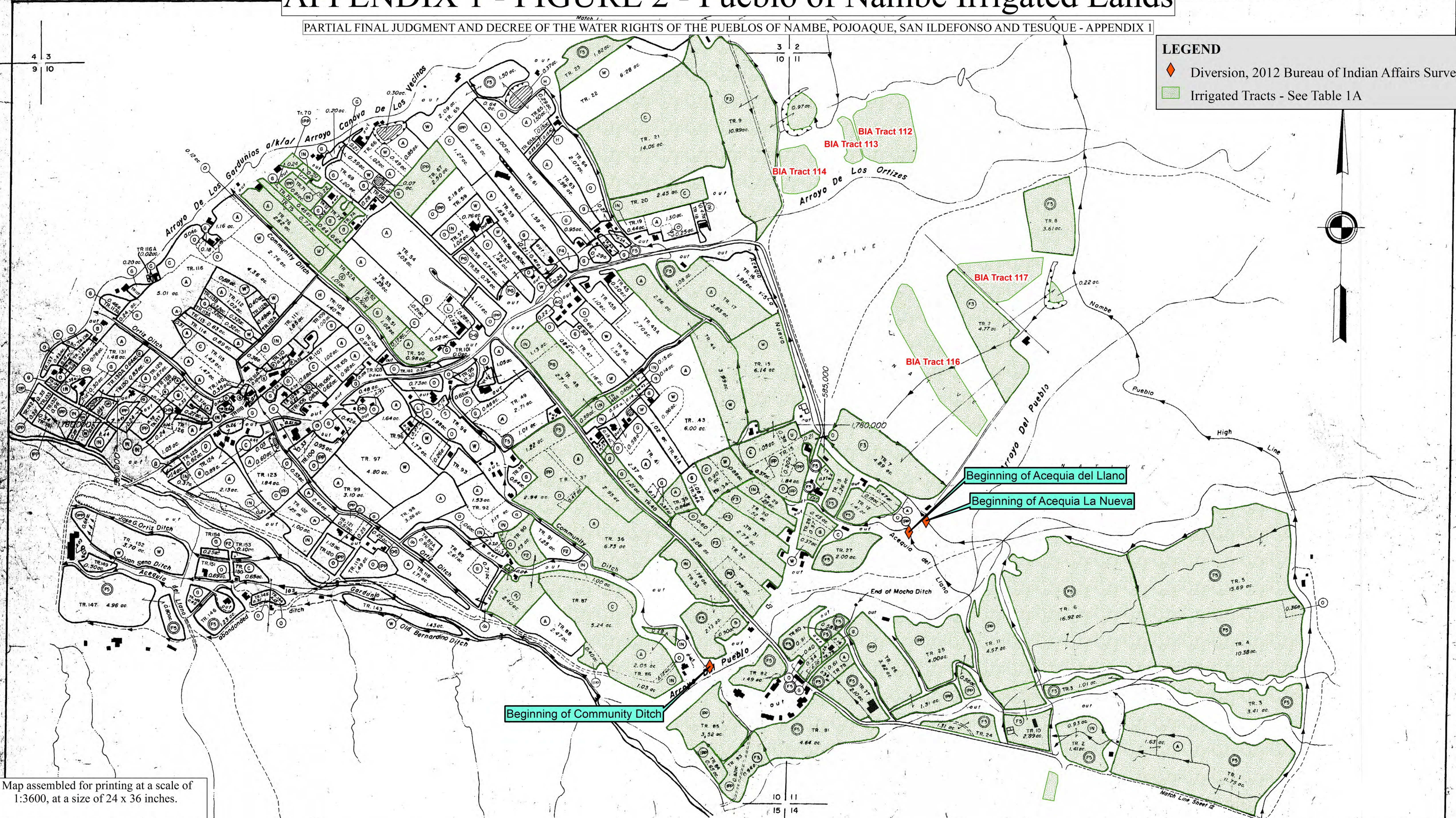


APPENDIX 1 - FIGURE 2 - Pueblo of Nambé Irrigated Lands

PARTIAL FINAL JUDGMENT AND DECREE OF THE WATER RIGHTS OF THE PUEBLOS OF NAMBE, POJOAQUE, SAN ILDEFONSO AND TESUQUE - APPENDIX I

LEGEND

- ◆ Diversion, 2012 Bureau of Indian Affairs Survey
- Irrigated Tracts - See Table 1A



Map assembled for printing at a scale of 1:3600, at a size of 24 x 36 inches.
 Prepared by US Bureau of Indian Affairs,
 Southwest Regional Office,
 Albuquerque, NM
 September 2013

Base map reproduced from the
 State of New Mexico, Office of State Engineer,
 Upper Rio Grande Hydrographic Survey,
 Nambé - Pojoaque - Tesuque, 1964.

TOWNSHIP 19 NORTH, RANGE 9 EAST
WITHIN THE NAMBE PUEBLO GRANT

STATE OF NEW MEXICO
OFFICE OF STATE ENGINEER
 S. E. REYNOLDS, STATE ENGINEER

UPPER RIO GRANDE
HYDROGRAPHIC SURVEY
NAMBE - POJOAQUE - TESUQUE
 1964

ENGINEER SURVEYOR
 STEREOCOMPILATION BY
 TRACED BY
 APPROVED

E. R. ALLEN
 E. COOPER
 E. L. BONZALES
 M. H. BOYCE

SCALE 1" = 300'
 SHEET NO. 11

STEREOCOMPILATION OF PLANIMETRY FROM PHOTOS, RDS 5-139, 5-138