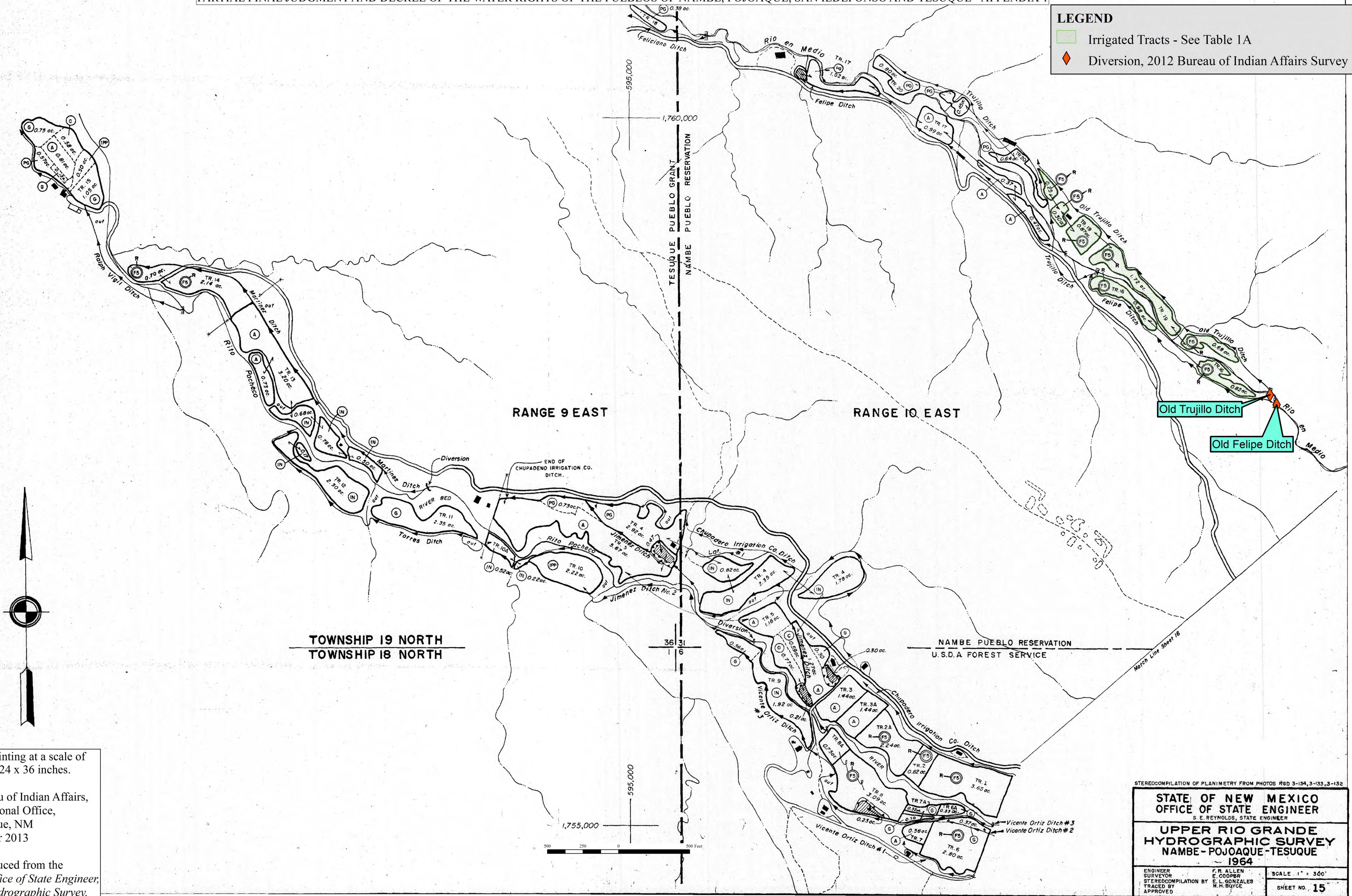


APPENDIX 1 - FIGURE 5 - Pueblo of Nambé Irrigated Lands

PARTIAL FINAL JUDGMENT AND DECREE OF THE WATER RIGHTS OF THE PUEBLOS OF NAMBE, POJOAQUE, SAN ILDEFONSO AND TESUQUE - APPENDIX I

LEGEND

- Irrigated Tracts - See Table 1A
- Diversion, 2012 Bureau of Indian Affairs Survey



STEREOCOPIATION OF PLANIMETRY FROM PHOTOS RGD 3-134, 3-133, 3-132

STATE OF NEW MEXICO
OFFICE OF STATE ENGINEER
S. E. REYNOLDS, STATE ENGINEER

UPPER RIO GRANDE
HYDROGRAPHIC SURVEY
NAMBE - POJOAQUE - TESUQUE
1964

ENGINEER SURVEYOR: F. R. ALLEN, E. L. COOPER
STEREOCOPIATION BY: E. L. GONZALES, M. R. BOYCE
APPROVED

SCALE: 1" = 360'
SHEET NO. 15