
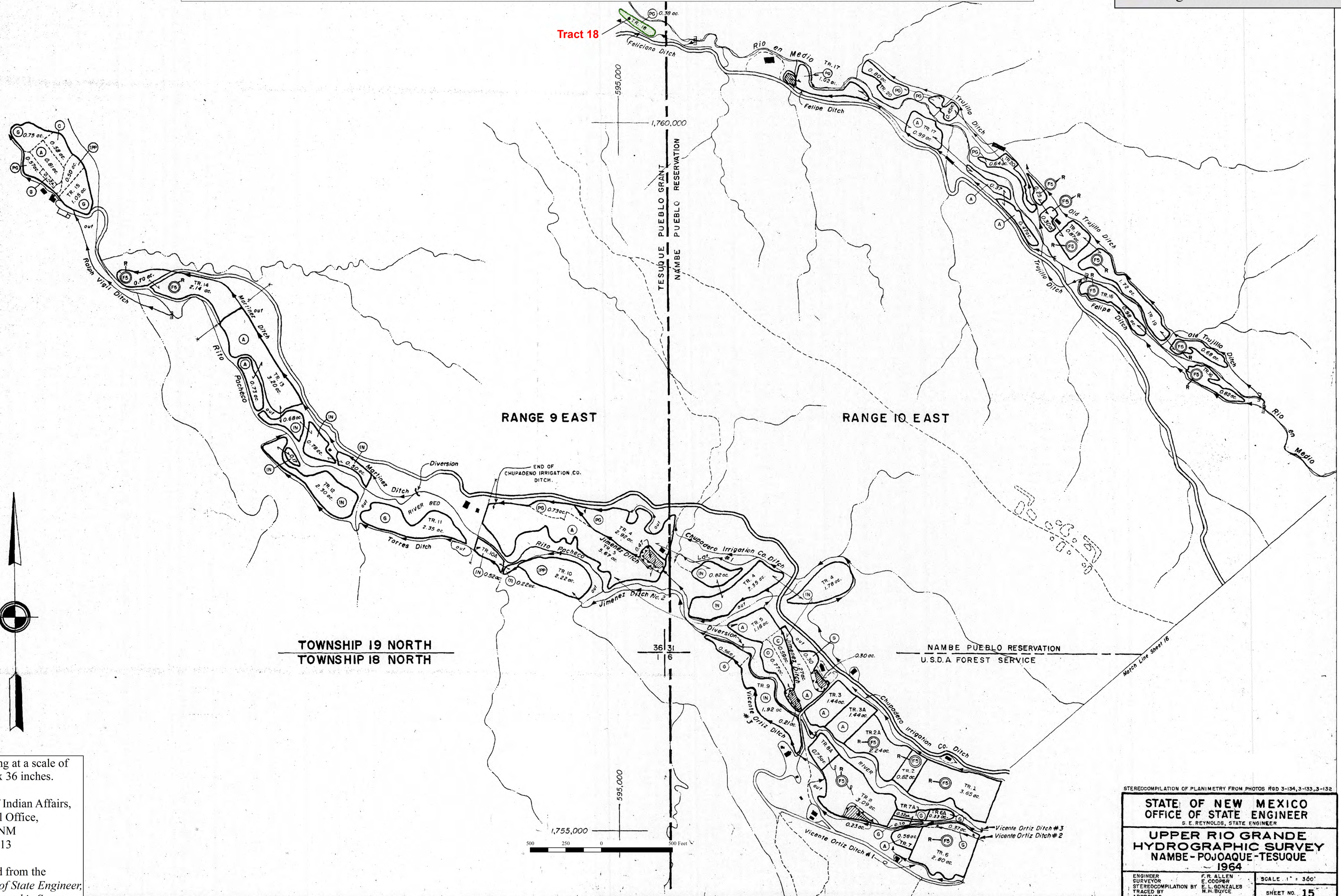


APPENDIX 3 - FIGURE 1 - Pueblo of Tesuque Irrigated Lands

PARTIAL FINAL JUDGMENT AND DECREE OF THE WATER RIGHTS OF THE PUEBLOS OF NAMBE, POJOAQUE, SAN ILDEFONSO AND TESUQUE - APPENDIX 3

LEGEND

 Irrigated Tracts - See Table 1A



Map assembled for printing at a scale of 1:3600, at a size of 24 x 36 inches.

Prepared by US Bureau of Indian Affairs,
Southwest Regional Office,
Albuquerque, NM
September 2013

Base map reproduced from the
State of New Mexico, Office of State Engineer,
Upper Rio Grande Hydrographic Survey,
Nambé - Pojoaque - Tesuque, 1964.

STEREOCOMPILATION OF PLANIMETRY FROM PHOTOS R6D 3-134, 3-133, 3-132

STATE OF NEW MEXICO OFFICE OF STATE ENGINEER <small>S. E. REYNOLDS, STATE ENGINEER</small>	
UPPER RIO GRANDE HYDROGRAPHIC SURVEY NAMBE - POJOAQUE - TESUQUE 1964	
<small>ENGINEER SURVEYOR</small> <small>STEREOCOMPILATION BY</small> <small>TRACED BY</small> <small>APPROVED</small>	<small>F. R. ALLEN</small> <small>E. COOPER</small> <small>L. GONZALES</small> <small>M. H. BOYCE</small>
<small>SCALE 1" = 360'</small>	<small>SHEET NO. 15</small>