



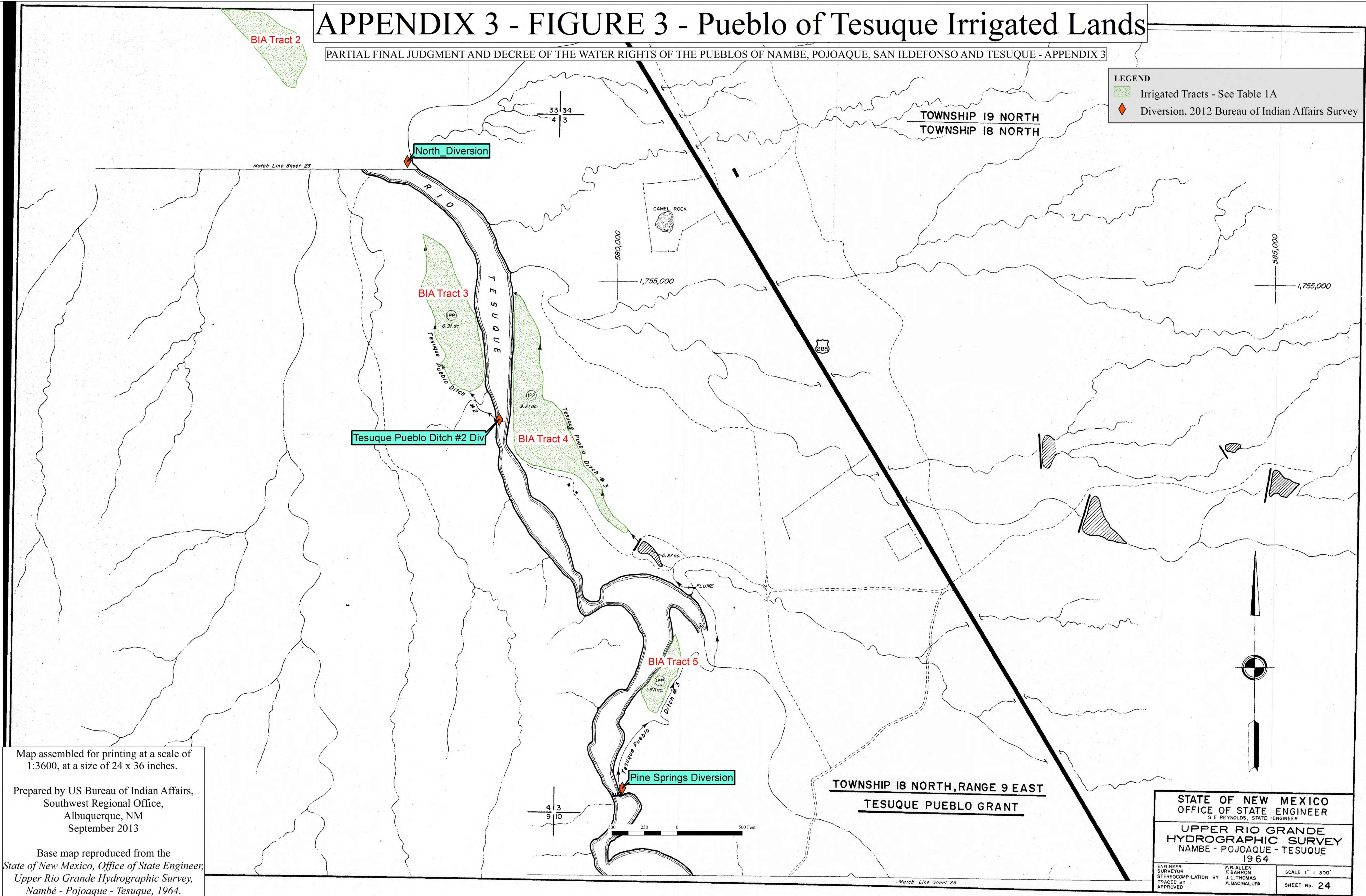
APPENDIX 3 - FIGURE 3 - Pueblo of Tesuque Irrigated Lands

PARTIAL FINAL JUDGMENT AND DECREE OF THE WATER RIGHTS OF THE PUEBLOS OF NAMBE, POJOAQUE, SAN ILDEFONSO AND TESUQUE - APPENDIX 3

BIA Tract 2

LEGEND

-  Irrigated Tracts - See Table 1A
-  Diversion, 2012 Bureau of Indian Affairs Survey



Map assembled for printing at a scale of 1:3600, at a size of 24 x 36 inches.

Prepared by US Bureau of Indian Affairs,
Southwest Regional Office,
Albuquerque, NM
September 2013

Base map reproduced from the
*State of New Mexico, Office of State Engineer,
Upper Rio Grande Hydrographic Survey,
Nambé - Pojoaque - Tesuque, 1964.*

STATE OF NEW MEXICO OFFICE OF STATE ENGINEER <small>S. E. REYNOLDS, STATE ENGINEER</small>	
UPPER RIO GRANDE HYDROGRAPHIC SURVEY NAMBE - POJOAQUE - TESUQUE 1964	
ENGINEER SURVEYOR STEREOCOPIATION BY TRACED BY APPROVED	F. R. ALLEN F. BARRON J. L. THOMAS A. BACIGALUPA
SCALE 1" = 300'	
SHEET No. 24	