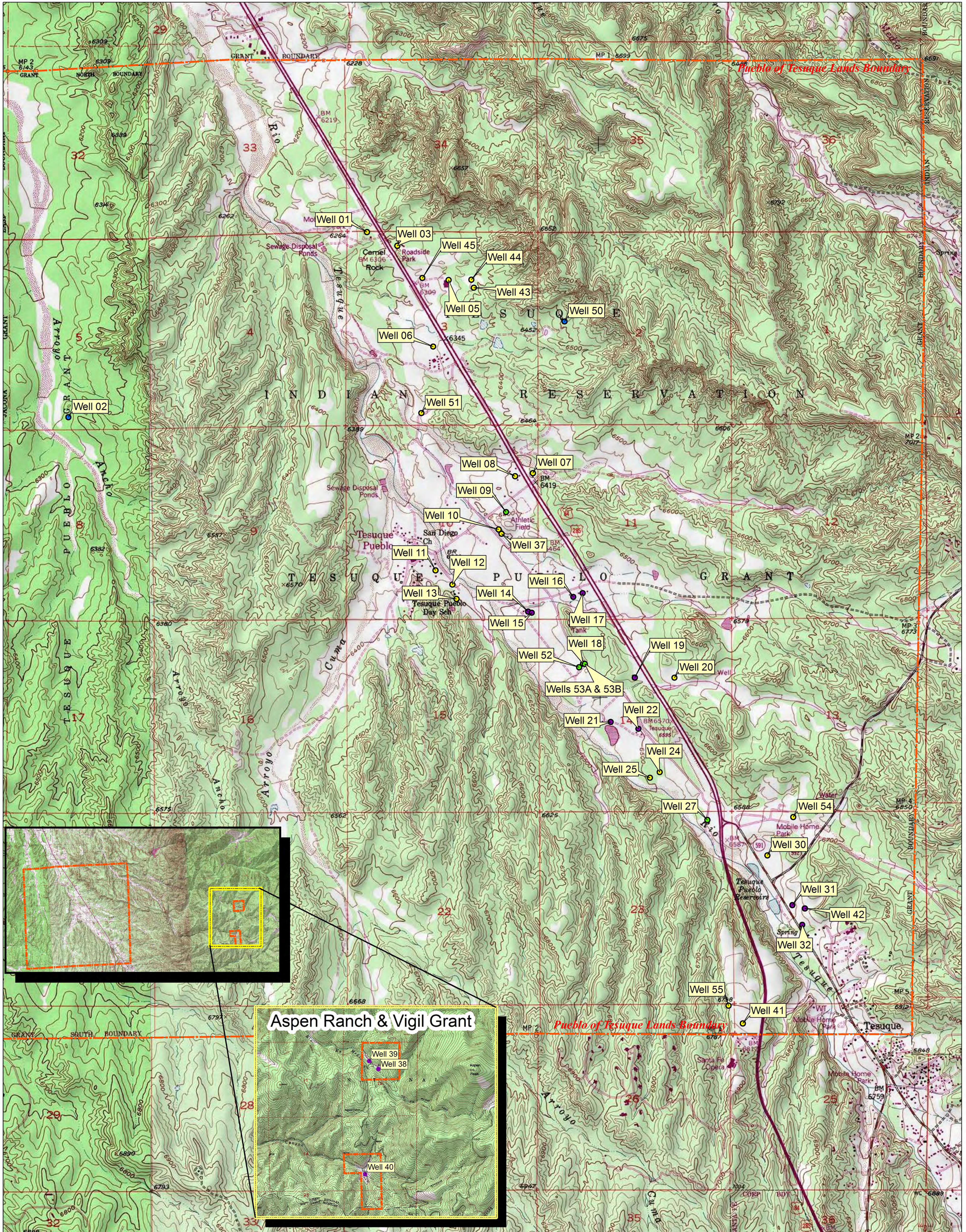
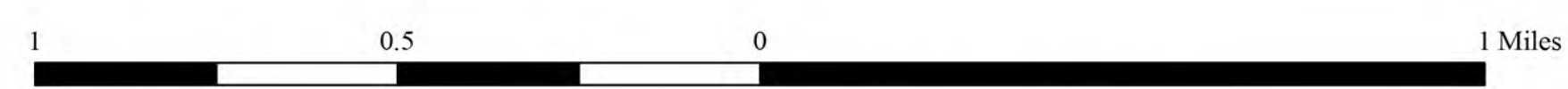


APPENDIX 3 - FIGURE 6 - Wells within the Pueblo of Tesuque Lands

PARTIAL FINAL JUDGMENT AND DECREE OF THE WATER RIGHTS OF THE PUEBLOS OF NAMBE, POJOAQUE, SAN ILDEFONSO AND TESUQUE - APPENDIX 3



Tesuque Wells (43 Total) ● Community/Commercial/Domestic/Industrial (22) ● Domestic (13) ● Irrigation (5) ● Livestock (2)



Base map excerpts from USGS 7.5 minute Quadrangles Horcado Ranch & Tesuque, NM, rendered in National Geographic TOPO! Software

Map assembled for printing at 1:15,000, at size of 22 x 34 inches

US Department of Interior, Bureau of Indian Affairs, Southwest Regional Office, Albuquerque, NM, September 2013