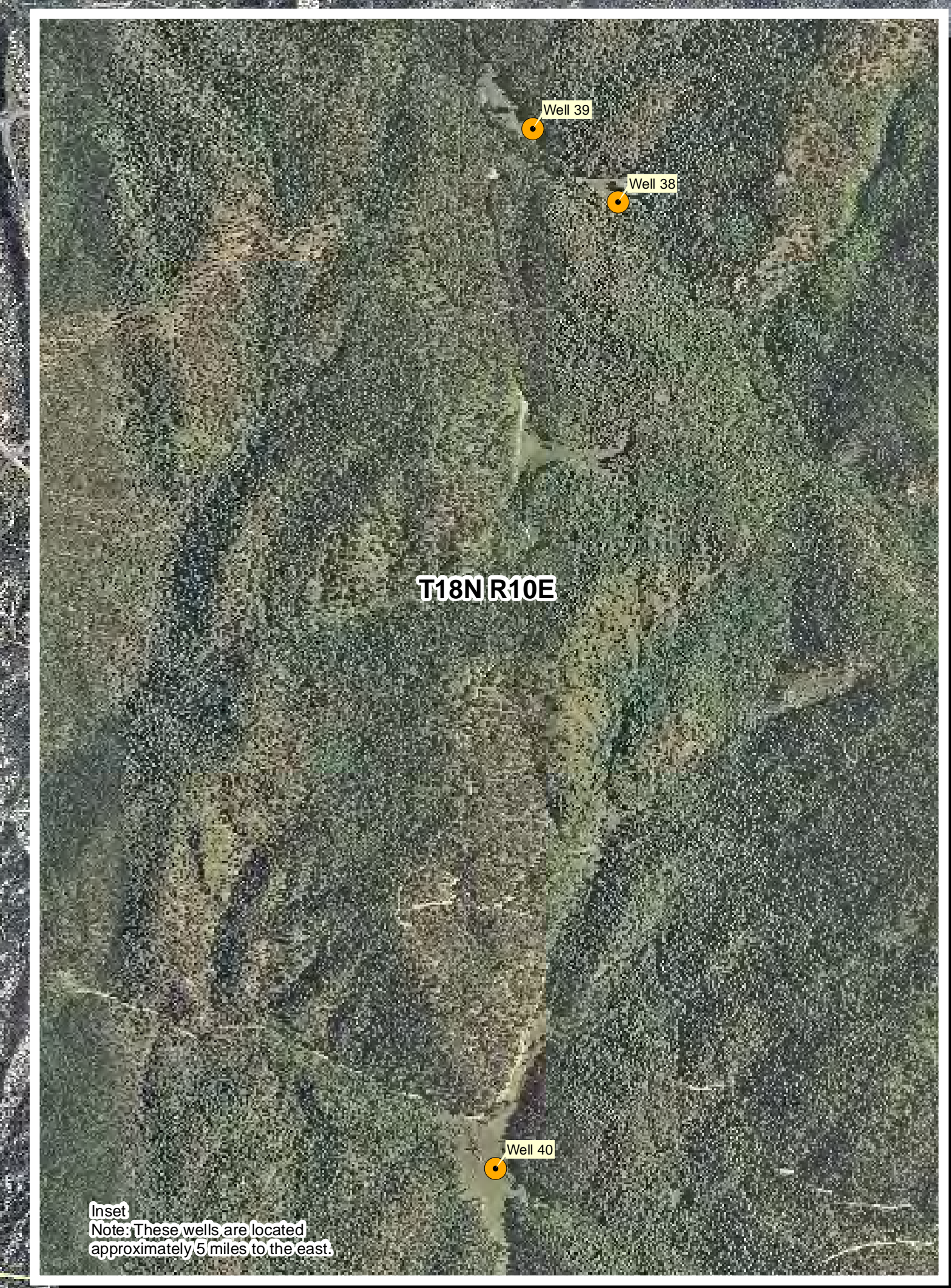
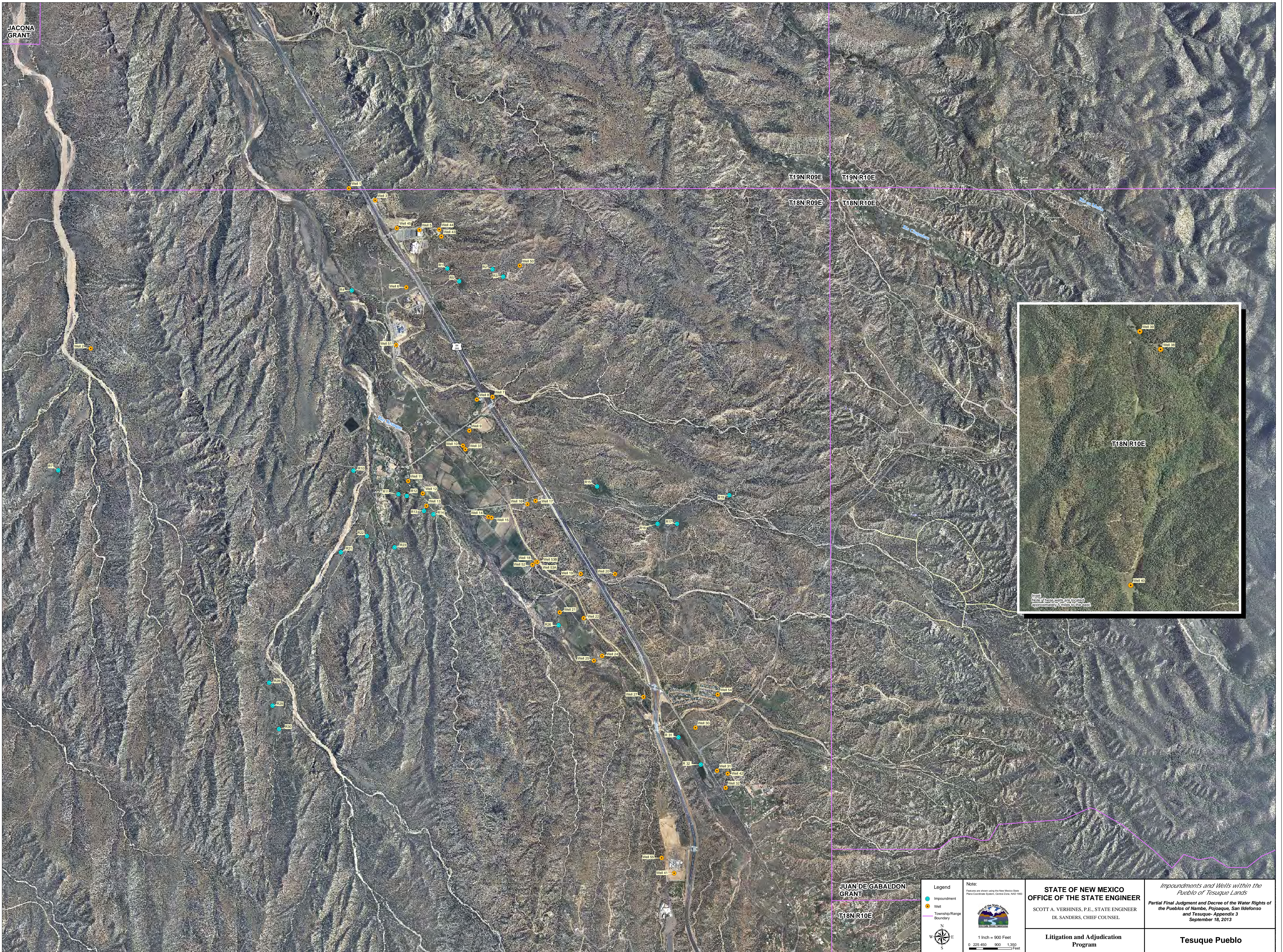


JACONA GRANT



JUAN DE GABALDON GRANT

T18N/R10E

Legend

- Impoundment
- Well
- Township/Range Boundary

Note:
Features are shown using the New Mexico State Plane Coordinate System, Central Zone, NAD 83.

1 inch = 900 Feet
0 225 450 900 1,350 Feet

STATE OF NEW MEXICO
OFFICE OF THE STATE ENGINEER
SCOTT A. VERHINES, P.E., STATE ENGINEER
DL SANDERS, CHIEF COUNSEL

Litigation and Adjudication Program

Impoundments and Wells within the Pueblo of Tesuque Lands
Partial Final Judgment and Decree of the Water Rights of the Pueblos of Nambé, Pojoaque, San Ildefonso and Tesuque- Appendix 3
September 16, 2013

Tesuque Pueblo