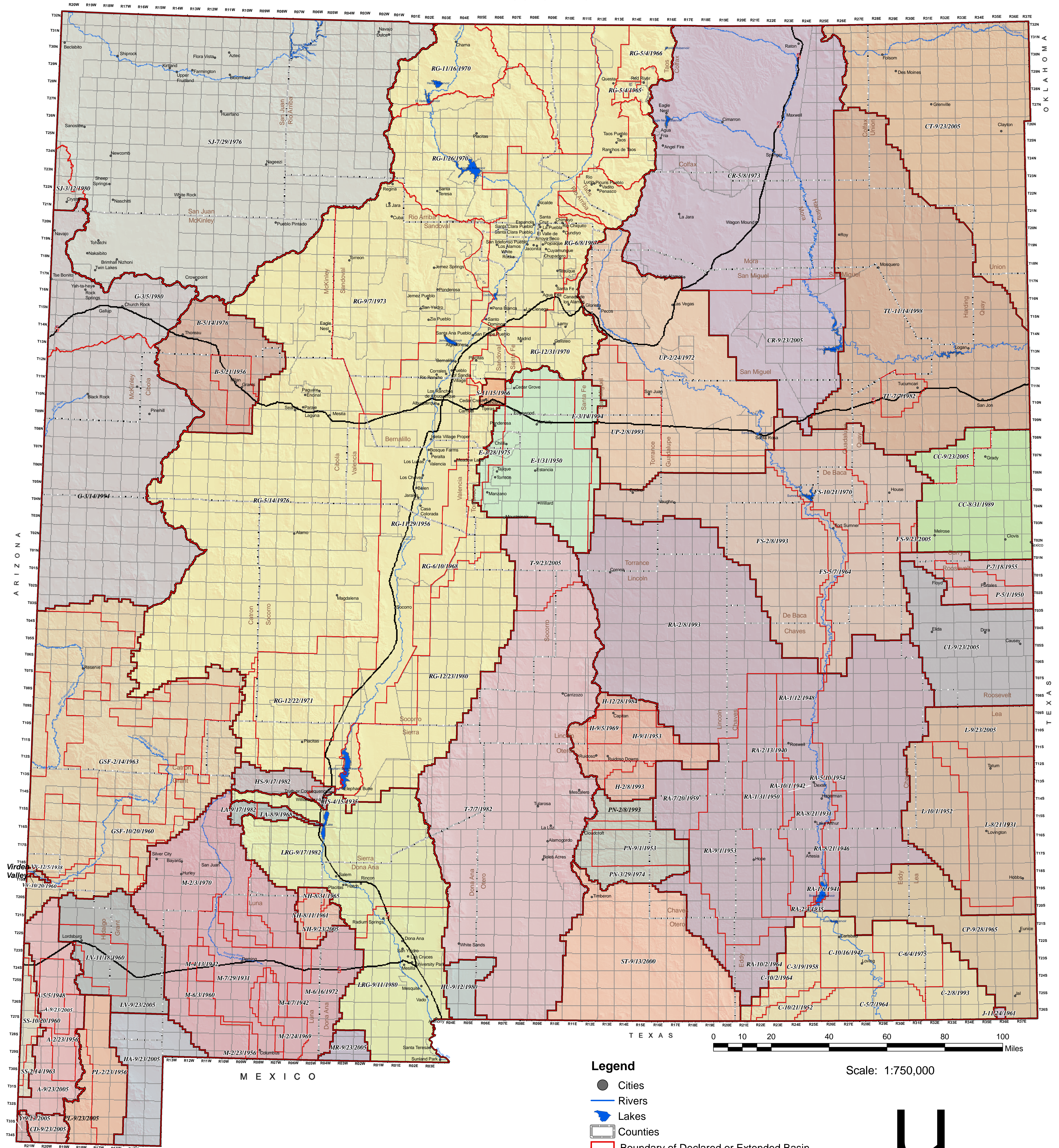


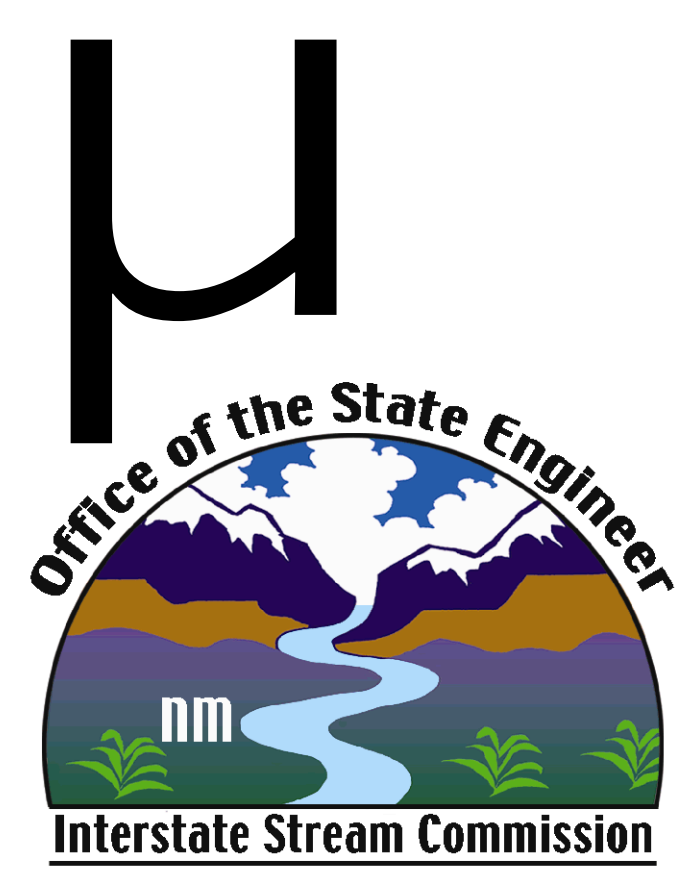
Office of the State Engineer Declared Underground Water Basins

COLORADO



- Legend**
- Cities
 - Rivers
 - Lakes
 - Counties
 - Boundary of Declared or Extended Basin
 - B-5/23/1956** Basin Prefix-Date of Basin Declaration or Extension
 - Full Basin Boundary (including extensions)

Scale: 1:750,000



Note:
Map produced by M. Porter, Hydrology Bureau
Update Chlotzker, October 2005, Water Rights Bureau
Directory: \\gis-srv\er\Statewide_projects\NewBasins\Final\basins_simple_wdates.mdb

Administrative basin boundaries delineated by this map are subject to review by Water Rights and may be revised to more closely reflect boundaries described in State Engineers Rules and Regulations. Please refer to this document for precise boundaries of the administrative basin boundaries.
Administrative Basins Coverage is based on the Bureau of Land Management Geographic Coordinate Data Base (GCDB) coordinate data (www.blm.gov/gcdb/)
Map is created in UTM NAD83, Zone 13, Meters, and coordinates shown on the edge of the map are same.
All other data is from the OSE Enterprise GIS data repository or RGIS data repository (rgis.unm.edu)